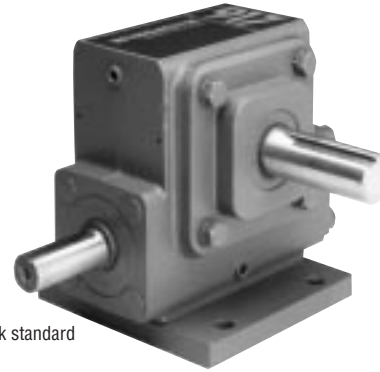


MODEL†	910	913	917	920	924	926	930	935	943
DB SHIPPING WEIGHT	8	14	21	22	40	41	57	80	122
MDB SHIPPING WEIGHT‡	10	16	24	25	44	45	61	84	127
APPROX. OIL CAPACITY (PINTS)	.1	.3	.7	.8	1.8	2.1	2.7	3.5	4.4

**MODEL DB**  
Assembly R

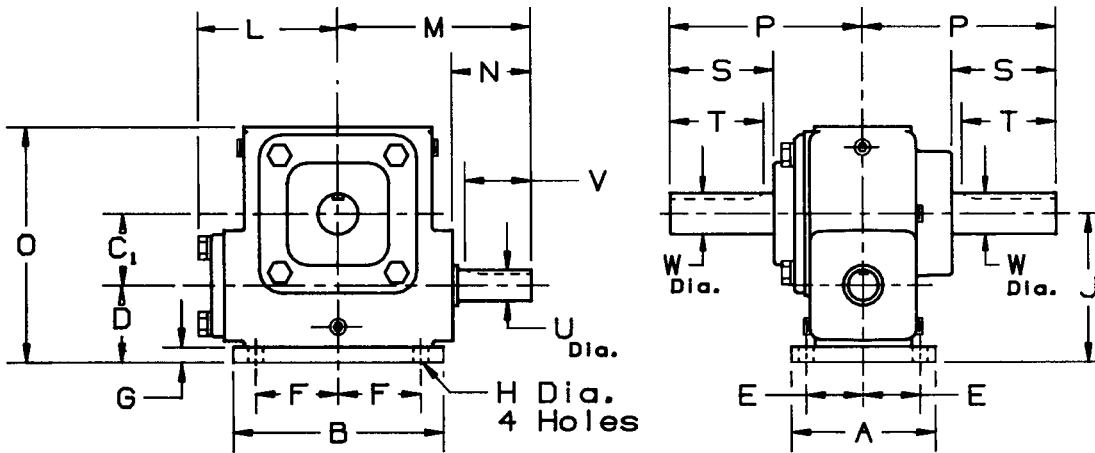


This model is stock standard in all sizes.

**GEAR RATIOS AVAILABLE 4:1 THRU 100:1\*\***  
**TORQUE AND HP RATINGS/OVERHUNG LOAD RATINGS . . . . . PAGES 20-117**  
**MOUNTING POSITIONS . . . . . PAGE 187**  
**SERVICE FACTORS . . . . . PAGES 228-230**  
**HYDRAULIC MOTOR ADAPTERS . . . . . PAGE 174**

†Weights are approximate and include shipping carton.  
 ‡Weight given for 48C thru 145TC. For 182/4TC and 213/5TC add 4 lbs.  
 \*\*80:1 and 100:1 not available for Size 913.

## DIMENSIONS



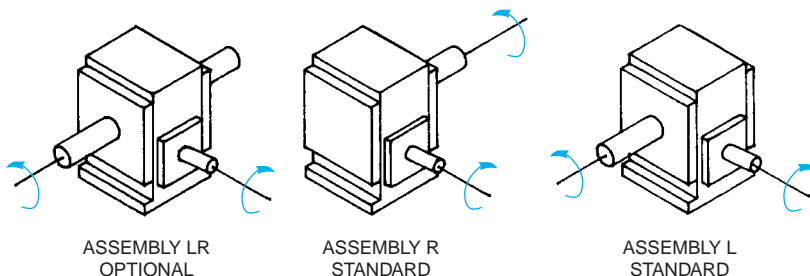
## SPEED REDUCER DIMENSIONS (IN INCHES)

SIZE	A	B	C <sub>1</sub>	D	E	F	G	H	J	L	M	O	P	HIGH SPEED SHAFT				SLOW SPEED SHAFT				SIZE
														U*	N	V	KEYWAY	W*	S	T	KEYWAY	
910	3.69	4.62	1.000	1.75	1.44	1.88	.44	.344	2.75	1.70	2.88	4.07	2.88	.375	1.18	.80	.09 x .05	.500	1.14	1.00	.13 x .06	910
913	3.50	5.00	1.333	1.63	1.38	2.13	.38	.281	2.96	2.83	4.12	4.71	4.00	.625	1.81	1.63	.19 x .09	.750	2.06	1.88	.19 x .09	913
917	5.00	4.63	1.750	2.00	2.06	1.44	.50	.406	3.75	3.44	4.75	5.88	4.75	.750	1.94	1.69	.19 x .09	1.000	2.56	2.31	.25 x .13	917
920	5.00	4.63	2.000	2.00	2.06	1.44	.50	.406	4.00	3.44	5.00	6.13	4.75	.750	2.19	1.75	.19 x .09	1.000	2.56	2.31	.25 x .13	920
924	5.00	7.00	2.375	2.38	2.00	3.00	.38	.406	4.75	4.50	6.50	7.63	5.50	1.000	2.75	2.38	.25 x .13	1.250	2.81	2.63	.25 x .13	924
926	4.75	7.00	2.625	2.50	2.00	3.00	.38	.406	5.13	4.50	6.50	8.25	5.50	1.000	2.75	2.38	.25 x .13	1.250	2.81	2.63	.25 x .13	926
930	6.00	8.00	3.000	3.00	2.38	3.50	.50	.563	6.00	4.63	7.00	9.50	5.88	1.000	3.06	2.38	.25 x .13	1.375	2.88	2.75	.31 x .16	930
935	6.50	10.00	3.500	3.13	2.63	4.13	.50	.563	6.63	5.06†	7.38	10.63	7.00	1.000	2.31	2.50	.25 x .13	1.750	3.75	3.63	.38 x .19	935
943	7.00	11.00	4.250	3.50	2.88	4.88	.63	.563	7.75	5.88‡	8.19	12.13	8.00	1.250	2.31	2.50	.25 x .13	2.000	4.38	4.19	.50 x .25	943

\*Shaft diameter tolerance +.000 -.001. For construction purposes send for Certified Dimension Sheets.  
 \*\*4:1, 7.5:1, 60:1, 80:1, and 100:1 not available for Size 910.

For larger sizes see C-Line Catalog 100 or D-90<sup>®</sup> TYPE DE<sup>®</sup> Catalog 190.  
 †L dimension equals 5.46 on MDB models.  
 ‡L dimension equals 6.28 on MDB models.

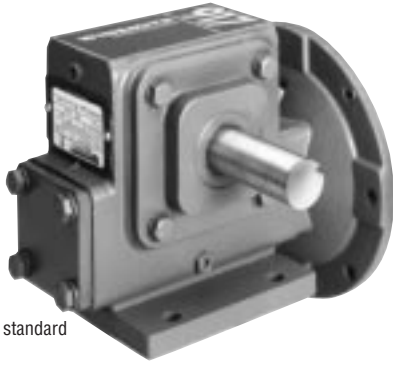
## SHAFT ARRANGEMENTS AND RELATIVE SHAFT ROTATIONS



AutoCAD<sup>®</sup> drawing for these models available in WINSMITH<sup>®</sup>'s Gear Graphics.

The input shaft may be driven in either direction.

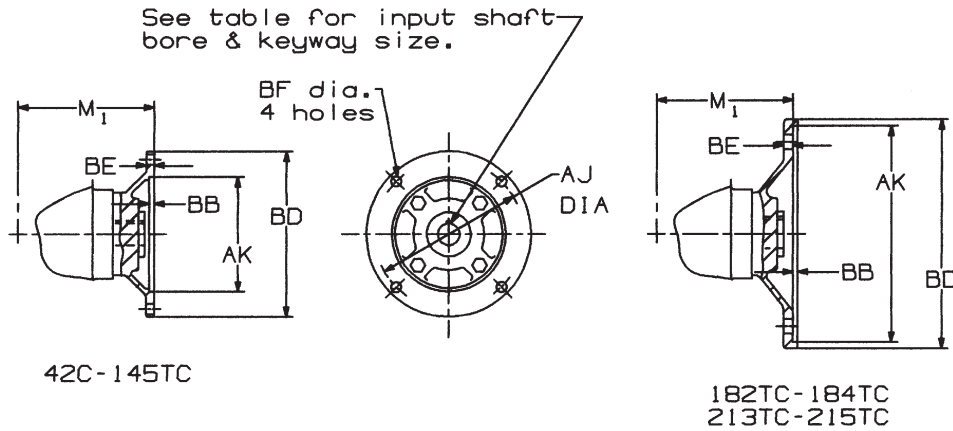
**MODEL MDB**  
Assembly L



This model is stock standard in all sizes.

Depending on size and base selection, the coupling style adapter may interfere with the mounting base. Consult the factory.

**DIMENSIONS**



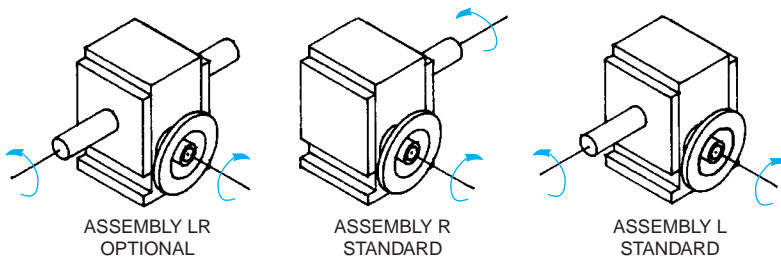
SIZE	HOLLOW INPUT MOTOR ADAPTER			
	M <sub>1</sub> 42C-48C	M <sub>1</sub> 56C-145TC	M <sub>1</sub> 182TC-184TC	M <sub>1</sub> 213TC-215TC
910	3.57	3.74 $\Delta$	NA	NA
913	3.56	3.63 $\Delta$	NA	NA
917	4.06	4.06	NA	NA
920	4.06	4.06	NA	NA
924	NA	5.38	5.38	NA
926	NA	5.38	5.38	NA
930	NA	5.56	5.56	NA
935	NA	5.81	5.81	NA
943	NA	6.63	6.63	6.63

FRAME NO.	42C-48C	56C	143TC-145TC	182TC-184TC	213TC-215TC
AJ	3.75	5.88	5.88	7.25	7.25
AK	3.00	4.50	4.50	8.50	8.50
BB	.19	.19	.19	.19	.19
BD	4.50*	6.50	6.50	9.00	9.00
BE	.34	.31	.31	.38	.38
BF	.281	.406	.406	.531	.531
KEYWAY	.13 x .06	.19 x .09		.25 x .13	.31 x .16
BORE $\begin{smallmatrix} +.001 \\ -.000 \end{smallmatrix}$	.5005 $\square$	.6255	.8755	1.1255	1.3755

$\square$  42C frame has .3755 bore, .094 x .047 keyway.  
\*BD=4.63 on size 910.

$\Delta$ 56C frame only.

**SHAFT ARRANGEMENTS AND RELATIVE SHAFT ROTATIONS**



The input shaft may be driven in either direction.