

GENERAL INFORMATION

MODEL†	941	951	961	971	981
DT SHIPPING WEIGHT	185	280	425	640	845
FDT SHIPPING WEIGHT	189	285	430	646	853
CDT SHIPPING WEIGHT††	212	315	461	676	883
CFDT SHIPPING WEIGHT††	216	320	466	682	891
APPROX. OIL CAPACITY (QUARTS)	5.6	6.5	11	19	23

GEAR RATIO RANGE 5:1 THRU 100:1
DOUBLE REDUCTION VERSION

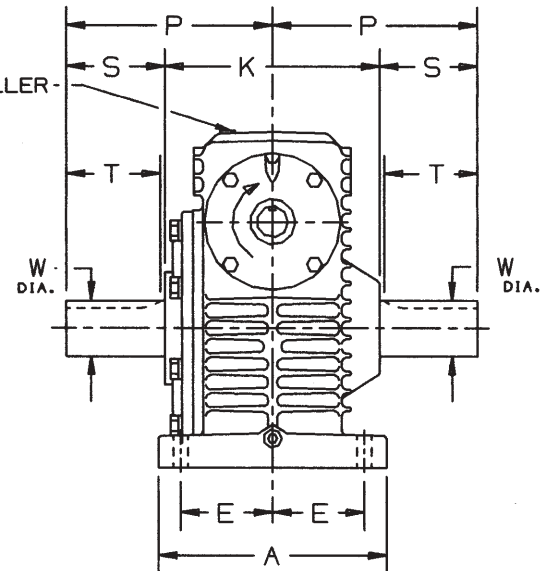
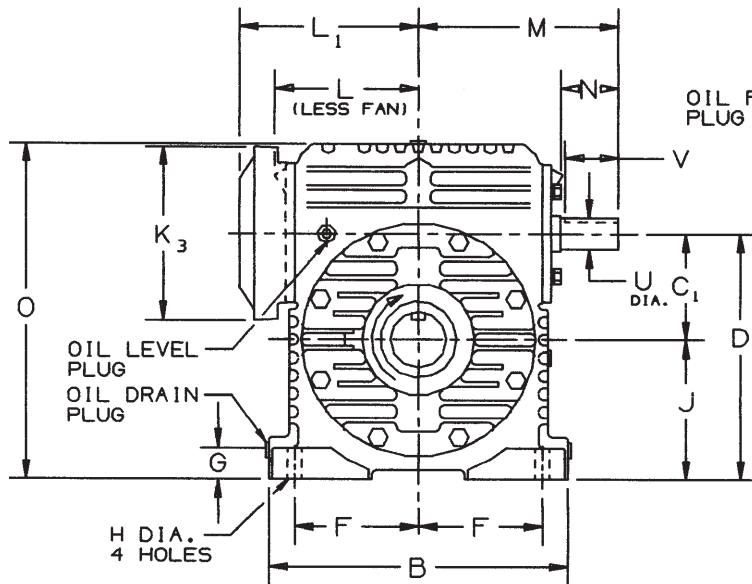
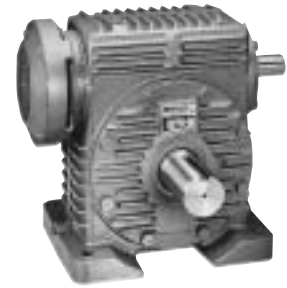
PAGE 62

†Weights are approximate and include shipping container.
††Add 20 pounds if adapter ring is furnished with motor adapter.

MODEL DT



MODEL FDT

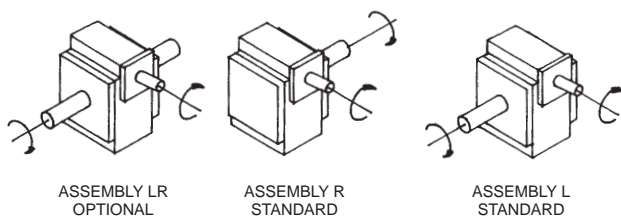


SIZE	A	B	C ₁	D	E	F	G	H	J	K	K ₃ DIA.	L°	L ₁	M	O	P	HIGH SPEED SHAFT				SLOW SPEED SHAFT			
																	U*	N	V	KEYWAY	W*	S	T	KEYWAY
941	10.00	12.76	3.937	9.94	4.13	5.25	1.38	.69	6.00	9.74	7.88	5.78	7.81	9.00	14.75	9.25	1.500	3.22	3.25	3/8 x 3/16	2.250	4.38	4.19	1/2 x 1/4
951	11.25	15.28	4.921	11.80	4.50	6.38	1.50	.81	6.88	10.00	7.88	6.77	8.56	9.73	16.55	9.38	1.500	3.00	3.06	3/8 x 3/16	2.500	4.38	4.13	5/8 x 3/16
961	12.75	16.58	5.906	13.66	5.13	6.88	1.69	.94	7.75	12.00	9.63	8.47	10.69	11.10	18.66	11.50	1.750	3.17	3.12	3/8 x 3/16	3.125	5.50	5.25	3/4 x 3/8
971	15.25	19.40	6.890	15.89	6.25	8.13	2.00	1.06	9.00	13.38	10.75	9.39	12.22	13.25	23.02	13.50	1.750	4.25	4.25	3/8 x 3/16	3.500	6.81	6.56	7/8 x 7/16
981	16.75	22.19	7.874	17.87	6.75	9.25	2.13	1.19	10.00	15.13	11.50	10.45	12.69	15.50	25.63	15.50	2.000	5.60	5.47	1/2 x 1/4	3.875	7.94	7.69	1 x 1/2
990 ^Δ	19.75	28.76	9.843	21.94	8.38	12.63	2.25	1.06	12.00	18.52	N/A	14.38	N/A	19.25	30.88	15.72	2.375	6.00	5.75	5/8 x 3/16	4.250	6.46	6.22	1 x 1/2

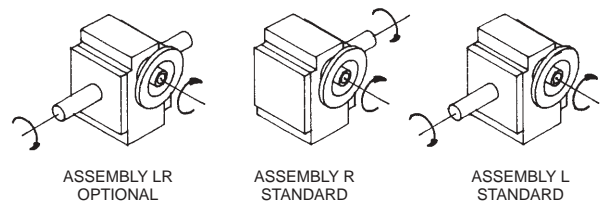
*Shaft diameter tolerance +.000, -.001. °Distance to high speed cap on units without a fan. (DT) ^ΔCheck with factory for availability, fan-cooled not available.

SHAFT ARRANGEMENTS AND RELATIVE SHAFT ROTATIONS

DT/FDT Models



CDT/CFDT Models



The input shaft may be driven in either direction.



D-90[®] TYPE DE[®]

CDT/CFDT

MODEL CDT



MODEL CFDT

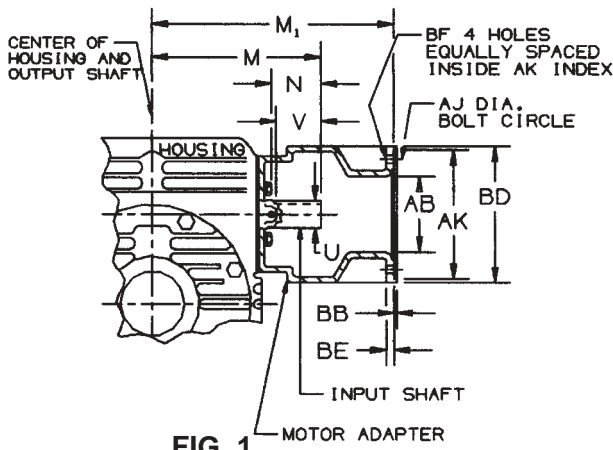


FIG. 1

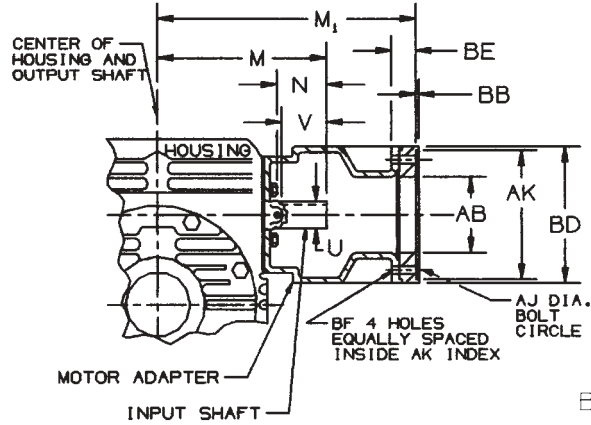


FIG. 2

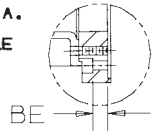


FIG. 3

UNIT SIZE	N.E.M.A. FRAME SIZE	OBSOLETE N.E.M.A. FRAME SIZE	AB	AJ	AK	BB	BD	BE	BF	U	N	V	M	M ₁	KEYWAY	CONFIGURATION
941	182TC-184TC	213C-215C	5.00	7.25	8.5005 / 8.5025	.19	9.00	.50	.53	1.500	2.63	3.25	9.00	13.00	3/8 x 3/16	FIGURE 1
	213TC-215TC		5.00	7.25	8.5005 / 8.5025	.19	9.00	.50	.53	1.500	2.63	3.25	9.00	13.00	3/8 x 3/16	FIGURE 1
	254TC-256TC	254UC-256UC	5.00	7.25	8.5005 / 8.5025	.19	9.00	1.44	.53	1.500	2.63	3.25	9.00	13.94	3/8 x 3/16	FIGURE 2*
951	182TC-184TC	213C-215C	5.00	7.25	8.5005 / 8.5025	.19	9.00	.50	.53	1.500	2.93	3.06	9.73	13.75	3/8 x 3/16	FIGURE 1
	213TC-215TC		5.00	7.25	8.5005 / 8.5025	.19	9.00	.50	.53	1.500	2.93	3.06	9.73	13.75	3/8 x 3/16	FIGURE 1
	254TC-256TC	254UC-256UC	5.00	7.25	8.5005 / 8.5025	.19	9.00	1.44	.53	1.500	2.93	3.06	9.73	14.69	3/8 x 3/16	FIGURE 2*
	284TC-286TC	284UC-286UC	5.00	9.00	10.5005 / 10.5025	.19	11.00	.81	.53	1.500	2.93	3.06	9.73	15.44	3/8 x 3/16	FIGURE 3*
961	213TC-215TC		5.00	7.25	8.5005 / 8.5025	.19	9.00	.50	.53	1.750	3.05	3.12	11.10	15.88	3/8 x 3/16	FIGURE 1
	254TC-256TC	254UC-256UC	5.00	7.25	8.5005 / 8.5025	.19	9.00	.50	.53	1.750	3.05	3.12	11.10	15.88	3/8 x 3/16	FIGURE 1
	284TC-286TC	284UC-286UC	5.00	9.00	10.5005 / 10.5025	.19	11.00	.25	.53	1.750	3.05	3.12	11.10	17.00	3/8 x 3/16	FIGURE 3*
971	213TC-215TC		5.00	7.25	8.5005 / 8.5025	.19	9.00	.50	.53	1.750	3.77	3.63	12.63	16.88	3/8 x 3/16	FIGURE 1
	254TC-256TC	254UC-256UC	5.00	7.25	8.5005 / 8.5025	.19	9.00	.50	.53	1.750	3.27	3.13	12.13	16.88	3/8 x 3/16	FIGURE 1
		284UC-286UC	5.00	9.00	10.5005 / 10.5025	.19	11.00	.81	.53	1.750	3.77	3.63	12.63	18.56	3/8 x 3/16	FIGURE 3*
	284TC-286TC		5.00	9.00	10.5005 / 10.5025	.19	11.00	.25	.53	1.750	3.77	3.63	12.63	18.00	3/8 x 3/16	FIGURE 3*
981	213TC-215TC		5.00	7.25	8.5005 / 8.5025	.19	9.00	.50	.53	2.000	3.66	3.47	13.50	17.88	1/2 x 1/4	FIGURE 1
	254TC-256TC	254UC-256UC	5.00	7.25	8.5005 / 8.5025	.19	9.00	.50	.53	2.000	3.29	3.09	13.13	17.88	1/2 x 1/4	FIGURE 1
		284UC-286UC	5.00	9.00	10.5005 / 10.5025	.19	11.00	.50	.53	2.000	3.29	3.09	13.13	19.00	1/2 x 1/4	FIGURE 3*
	284TC-286TC		5.00	9.00	10.5005 / 10.5025	.19	11.00	.50	.53	2.000	3.66	3.47	13.50	19.00	1/2 x 1/4	FIGURE 3*

*Adapter ring furnished with motor adapter.

UNIT SIZE	L-SERIES LOVEJOY COUPLING SELECTION VS. FRAME SIZE (Coupling not provided with unit.)						
	FRAME						
	182TC-184TC	213C-215C	213TC-215TC	254UC-256UC	254TC-256TC	284UC-286UC	284TC-286TC
941	L-110	L-110	L-110	L-110	L-150	—	—
951	L-110	L-110	L-110	L-110	L-150	L-150	L-190
961	L-150	L-150	L-150	L-150	L-150	L-190	L-190
971	—	L-150	L-150	L-150	L-150	L-190	L-190
981	—	L-190	L-190	L-190	L-190	L-190	L-190

If coupling selection differs from chart, input and/or motor shaft may need alteration.