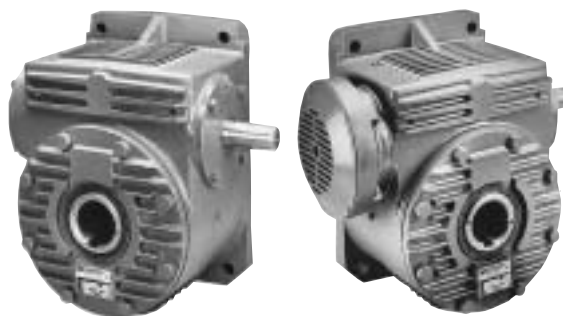


GENERAL INFORMATION

MODEL DSF

MODEL FDSF

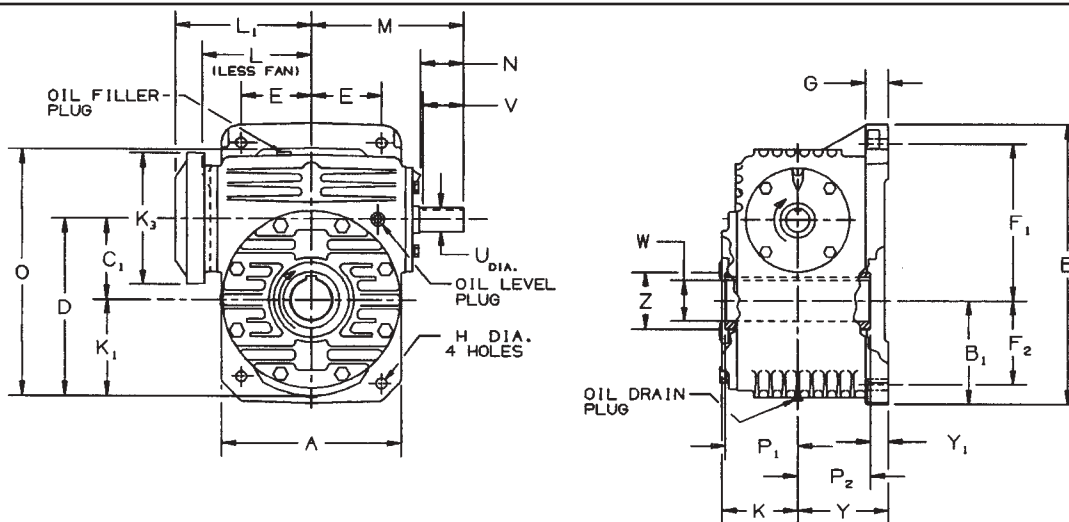


MODEL†	941	951	961	971	981
DSF SHIPPING WEIGHT	171	255	350	560	750
FDSF SHIPPING WEIGHT	175	260	355	566	758
CFDSF SHIPPING WEIGHT††	202	290	386	596	788
CDSF SHIPPING WEIGHT††	198	295	391	602	796
APPROX. OIL CAPACITY (QUARTS)	5.3	4	7.5	12	15

GEAR RATIO RANGE 5:1 THRU 100:1

DOUBLE REDUCTION VERSION PAGE 66

†Weights are approximate and include shipping container.
 ††Add 20 pounds if adapter ring is furnished with motor adapter.

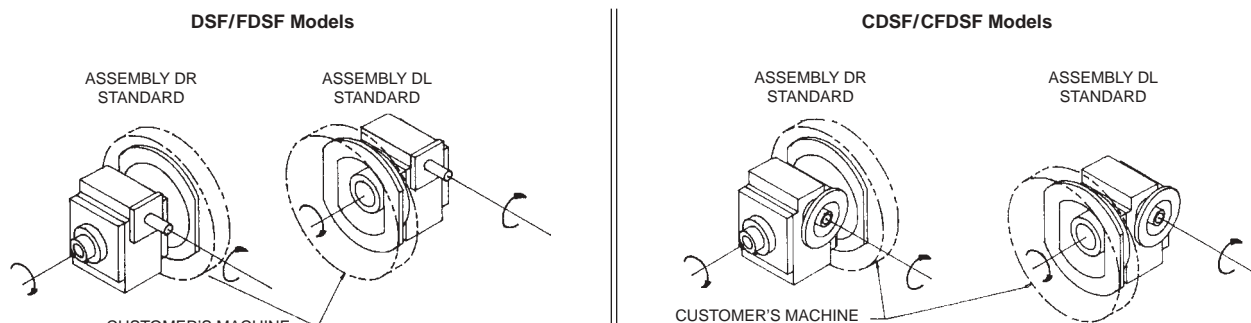


SIZE	A	B	B ₁	C ₁	D	E	F ₁	F ₂	G	H	K	K ₁	K ₃ DIA.	L°	L ₁	M	O	P ₁	P ₂	Y	Y ₁	Z
941	10.00	15.06	6.06	3.937	8.88	4.25	8.19	4.94	1.38	.69	4.44	4.94	7.88	5.78	7.81	9.00	13.69	4.25	4.25	5.00	.75	4.13
951	11.00	17.27	6.58	4.921	10.92	4.38	9.44	5.31	1.50	.81	4.81	6.00	7.88	6.77	8.56	9.73	15.80	5.06	5.06	5.50	.44	4.88
961	13.13	19.98	7.06	5.906	12.97	5.13	11.50	5.63	1.69	.94	5.70	7.06	9.63	8.47	10.69	11.10	18.15	5.31	5.31	6.50	1.19	5.75
971	15.38	23.31	8.45	6.890	15.20	6.31	13.25	6.88	2.00	1.06	6.56	8.31	10.75	9.39	12.22	13.25	22.33	6.69	6.69	7.00	.31	6.75
981	17.13	25.54	9.19	7.874	17.06	6.88	14.44	7.31	2.13	1.19	6.88	9.19	11.50	10.45	12.69	15.50	24.82	6.30	6.30	8.00	1.70	6.75

SIZE	HIGH SPEED SHAFT				SLOW SPEED SHAFT BORES [□]			
	U*	N	V	KEYWAY	W [△]	KEYWAY	W [△]	KEYWAY
941	1.500	3.22	3.25	3/8 x 3/16	2 1/16	3/8 x 3/16	2 15/16	3/8 x 3/16
951	1.500	3.00	3.06	3/8 x 3/16	2 3/8	3/8 x 3/16	3 7/16	7/8 x 7/16
961	1.750	3.17	3.12	3/8 x 3/16	3	3/4 x 3/8	3 15/16	1 x 3/8
971	1.750	4.25	4.25	3/8 x 3/16	3 1/4	3/4 x 3/8	4 7/16	1 x 1/2
981	2.000	5.60	5.47	1/2 x 1/4	3 3/4	7/8 x 7/16	4 7/16	1 x 1/2

- * Shaft diameter tolerance +.000, -.001.
- △ Bore tolerance +.000, +.002.
- Distance to high speed cap on units without a fan. (DSF)
- Check with factory for other bore sizes.

SHAFT ARRANGEMENTS AND RELATIVE SHAFT ROTATIONS



The input shaft may be driven in either direction.



D-90[®] TYPE DE[®]

CDSF/CFDSF

MODEL CDSF



MODEL CFDSF

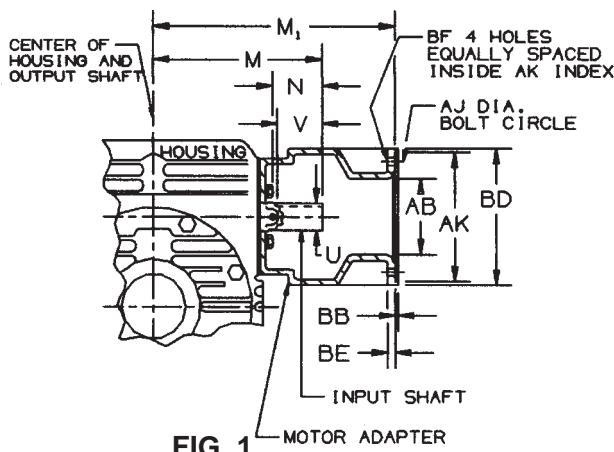


FIG. 1

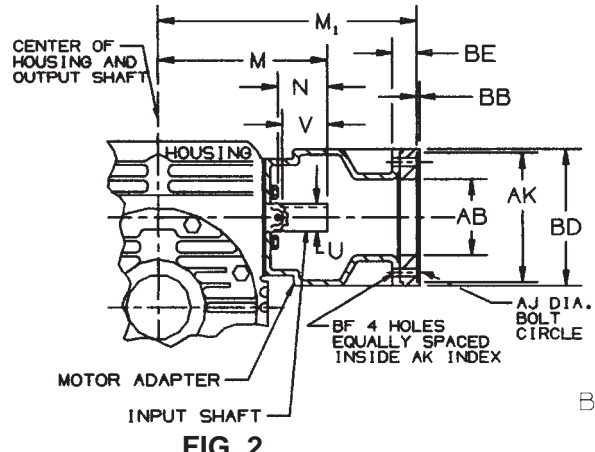


FIG. 2

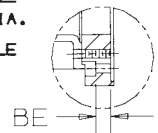


FIG. 3

UNIT SIZE	N.E.M.A. FRAME SIZE	OBSOLETE N.E.M.A. FRAME SIZE	AB	AJ	AK	BB	BD	BE	BF	U	N	V	M	M ₁	KEYWAY	CONFIGURATION
941	182TC-184TC	213C-215C	5.00	7.25	8.5005 / 8.5025	.19	9.00	.50	.53	1.500	2.63	3.25	9.00	13.00	3/8 x 3/16	FIGURE 1
	213TC-215TC		5.00	7.25	8.5005 / 8.5025	.19	9.00	.50	.53	1.500	2.63	3.25	9.00	13.00	3/8 x 3/16	FIGURE 1
	254TC-256TC	254UC-256UC	5.00	7.25	8.5005 / 8.5025	.19	9.00	1.44	.53	1.500	2.63	3.25	9.00	13.94	3/8 x 3/16	FIGURE 2*
951	182TC-184TC	213C-215C	5.00	7.25	8.5005 / 8.5025	.19	9.00	.50	.53	1.500	2.93	3.06	9.73	13.75	3/8 x 3/16	FIGURE 1
	213TC-215TC		5.00	7.25	8.5005 / 8.5025	.19	9.00	.50	.53	1.500	2.93	3.06	9.73	13.75	3/8 x 3/16	FIGURE 1
	254TC-256TC	254UC-256UC	5.00	7.25	8.5005 / 8.5025	.19	9.00	1.44	.53	1.500	2.93	3.06	9.73	14.69	3/8 x 3/16	FIGURE 2*
	284TC-286TC	284UC-286UC	5.00	9.00	10.5005 / 10.5025	.19	11.00	.81	.53	1.500	2.93	3.06	9.73	15.44	3/8 x 3/16	FIGURE 3*
961	213TC-215TC		5.00	7.25	8.5005 / 8.5025	.19	9.00	.50	.53	1.750	3.05	3.12	11.10	15.88	3/8 x 3/16	FIGURE 1
	254TC-256TC	254UC-256UC	5.00	7.25	8.5005 / 8.5025	.19	9.00	.50	.53	1.750	3.05	3.12	11.10	15.88	3/8 x 3/16	FIGURE 1
	284TC-286TC	284UC-286UC	5.00	9.00	10.5005 / 10.5025	.19	11.00	.25	.53	1.750	3.05	3.12	11.10	17.00	3/8 x 3/16	FIGURE 3*
971	213TC-215TC		5.00	7.25	8.5005 / 8.5025	.19	9.00	.50	.53	1.750	3.77	3.63	12.63	16.88	3/8 x 3/16	FIGURE 1
	254TC-256TC	254UC-256UC	5.00	7.25	8.5005 / 8.5025	.19	9.00	.50	.53	1.750	3.27	3.13	12.13	16.88	3/8 x 3/16	FIGURE 1
		284UC-286UC	5.00	9.00	10.5005 / 10.5025	.19	11.00	.81	.53	1.750	3.77	3.63	12.63	18.56	3/8 x 3/16	FIGURE 3*
	284TC-286TC		5.00	9.00	10.5005 / 10.5025	.19	11.00	.25	.53	1.750	3.77	3.63	12.63	18.00	3/8 x 3/16	FIGURE 3*
981	213TC-215TC		5.00	7.25	8.5005 / 8.5025	.19	9.00	.50	.53	2.000	3.66	3.47	13.50	17.88	1/2 x 1/4	FIGURE 1
	254TC-256TC	254UC-256UC	5.00	7.25	8.5005 / 8.5025	.19	9.00	.50	.53	2.000	3.29	3.09	13.13	17.88	1/2 x 1/4	FIGURE 1
		284UC-286UC	5.00	9.00	10.5005 / 10.5025	.19	11.00	.50	.53	2.000	3.29	3.09	13.13	19.00	1/2 x 1/4	FIGURE 3*
	284TC-286TC		5.00	9.00	10.5005 / 10.5025	.19	11.00	.50	.53	2.000	3.66	3.47	13.50	19.00	1/2 x 1/4	FIGURE 3*

*Adapter ring furnished with motor adapter.

L-SERIES LOVEJOY COUPLING SELECTION VS. FRAME SIZE (Coupling not provided with unit.)

UNIT SIZE	FRAME						
	182TC-184TC	213C-215C	213TC-215TC	254UC-256UC	254TC-256TC	284UC-286UC	284TC-286TC
941	L-110	L-110	L-110	L-110	L-150	—	—
951	L-110	L-110	L-110	L-110	L-150	L-150	L-190
961	L-150	L-150	L-150	L-150	L-150	L-190	L-190
971	—	L-150	L-150	L-150	L-150	L-190	L-190
981	—	L-190	L-190	L-190	L-190	L-190	L-190

If coupling selection differs from chart, input and/or motor shaft may need alteration.