

GENERAL INFORMATION

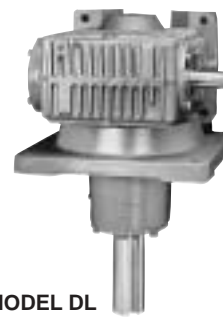
MODEL†	951	961
DL SHIPPING WEIGHT	470	650
FDL SHIPPING WEIGHT	475	655
CFDL SHIPPING WEIGHT††	505	686
CDL SHIPPING WEIGHT††	510	691
APPROX. OIL CAPACITY (QUARTS)	8	14

GEAR RATIO RANGE 5:1 THRU 100:1

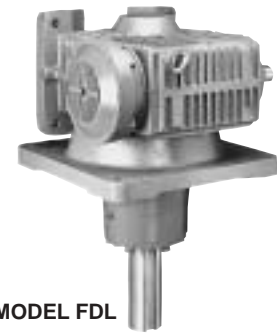
DOUBLE REDUCTION VERSION PAGE 70

†Weights are approximate and include shipping container.

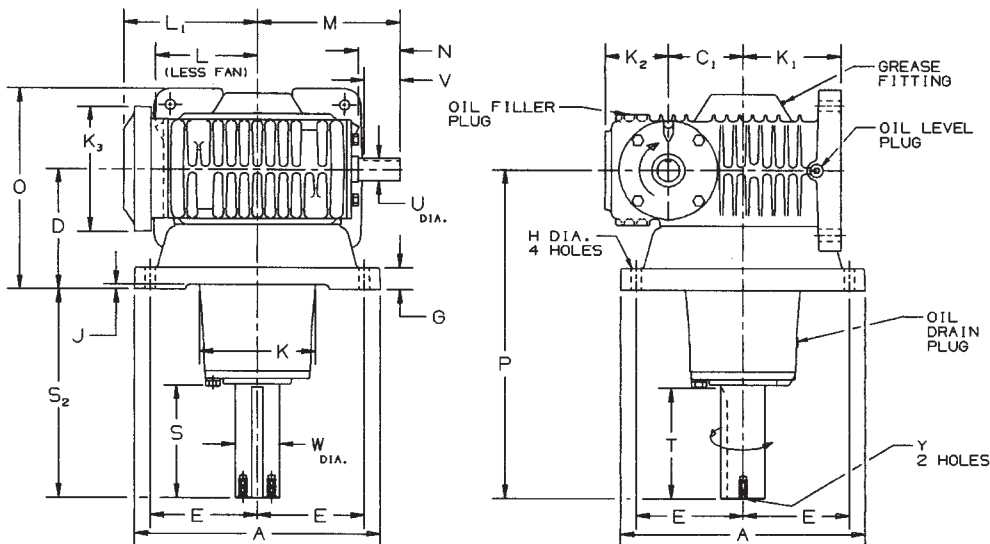
††Add 20 pounds if adapter ring is furnished with motor adapter.



MODEL DL



MODEL FDL



SIZE ^Δ	A	C ₁	D	E	G	H	J	K	K ₁	K ₂	K ₃ DIA.	L°	L ₁	M	O	P	Y DIMENSIONS		
																	TAP	DEPTH	BOLT CIRCLE
951	17.50	4.921	8.00	7.63	1.50	.81	.25	8.11	6.88	4.75	7.88	6.77	8.56	9.73	13.63	23.50	3/8 - 16	1.00	2.00
961	19.38	5.906	9.50	8.44	1.75	.94	.38	9.06	7.75	5.00	9.63	8.47	10.69	11.10	15.88	26.00	3/8 - 11	1.50	2.25

SIZE	HIGH SPEED SHAFT				SLOW SPEED SHAFT				
	U*	N	V	KEYWAY	W*	S	S ₂	T	KEYWAY
951	1.500	3.00	3.06	3/8 x 3/16	2.938	7.81	15.50	7.56	3/4 x 3/8
961	1.750	3.17	3.12	3/8 x 3/16	3.500	8.80	16.50	8.75	7/8 x 7/16

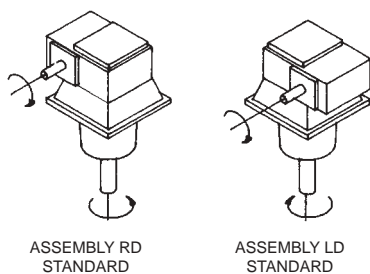
*Shaft diameter tolerance +.000, -.001.

°Distance to high speed cap on units without a fan. (DL)

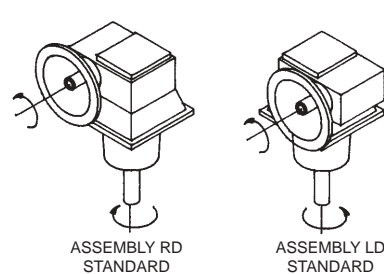
ΔFor information on sizes 941, 971 and 981, contact the factory.

SHAFT ARRANGEMENTS AND RELATIVE SHAFT ROTATIONS

DL/FDL Models



CDL/CFDL Models



The input shaft may be driven in either direction.



D-90® TYPE DE®

CDL/CFDL

MODEL CDL



MODEL CFDL

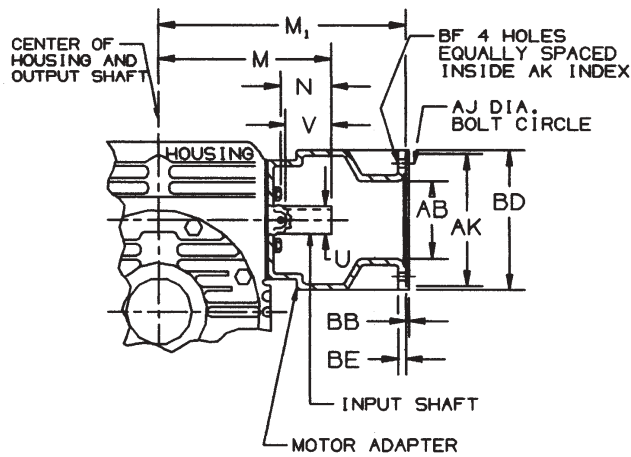
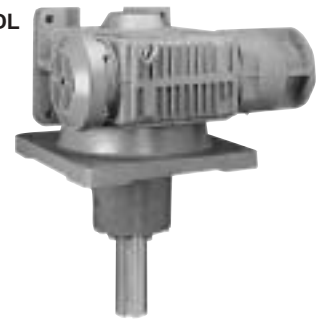


FIG. 1

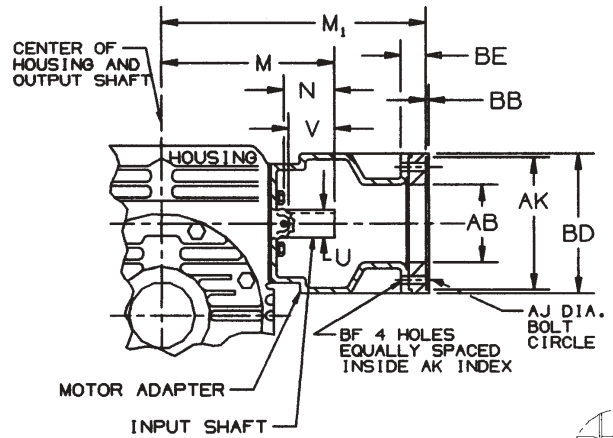


FIG. 2

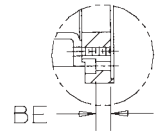


FIG. 3

UNIT SIZE	N.E.M.A. FRAME SIZE	OBSOLETE N.E.M.A. FRAME SIZE	AB	AJ	AK	BB	BD	BE	BF	U	N	V	M	M ₁	KEYWAY	CONFIGURATION
951	182TC - 184TC	213C - 215C	5.00	7.25	8.5005 / 8.5025	.19	9.00	.50	.53	1.500	2.93	3.06	9.73	13.75	3/8 x 3/16	FIGURE 1
	213TC - 215TC		5.00	7.25	8.5005 / 8.5025	.19	9.00	.50	.53	1.500	2.93	3.06	9.73	13.75	3/8 x 3/16	FIGURE 1
	254TC - 256TC	254UC - 256UC	5.00	7.25	8.5005 / 8.5025	.19	9.00	1.44	.53	1.500	2.93	3.06	9.73	14.69	3/8 x 3/16	FIGURE 2*
	284TC - 286TC	284UC - 286UC	5.00	9.00	10.5005 / 10.5025	.19	11.00	.81	.53	1.500	2.93	3.06	9.73	15.44	3/8 x 3/16	FIGURE 3*
961	213TC - 215TC		5.00	7.25	8.5005 / 8.5025	.19	9.00	.50	.53	1.750	3.05	3.12	11.10	15.88	3/8 x 3/16	FIGURE 1
	254TC - 256TC	254UC - 256UC	5.00	7.25	8.5005 / 8.5025	.19	9.00	.50	.53	1.750	3.05	3.12	11.10	15.88	3/8 x 3/16	FIGURE 1
	284TC - 286TC	284UC - 286UC	5.00	9.00	10.5005 / 10.5025	.19	11.00	.25	.53	1.750	3.05	3.12	11.10	17.00	3/8 x 3/16	FIGURE 3*

*Adapter ring furnished with motor adapter.

L-SERIES LOVEJOY COUPLING SELECTION VS. FRAME SIZE (Coupling not provided with unit.)

UNIT SIZE	FRAME						
	182TC - 184TC	213C - 215C	213TC - 215TC	254UC - 256UC	254TC - 256TC	284UC - 286UC	284TC - 286TC
951	L-110	L-110	L-110	L-110	L-150	L-150	L-190
961	L-150	L-150	L-150	L-150	L-150	L-190	L-190

If coupling selection differs from chart, input and/or motor shaft may need alteration.