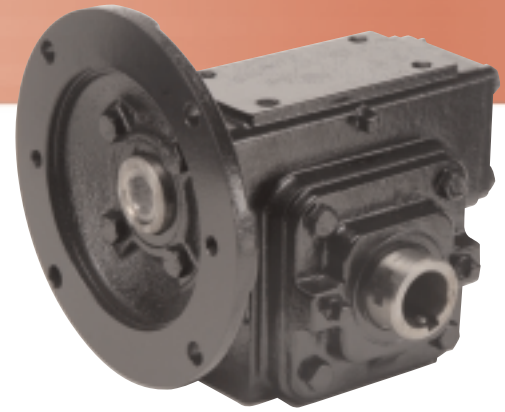


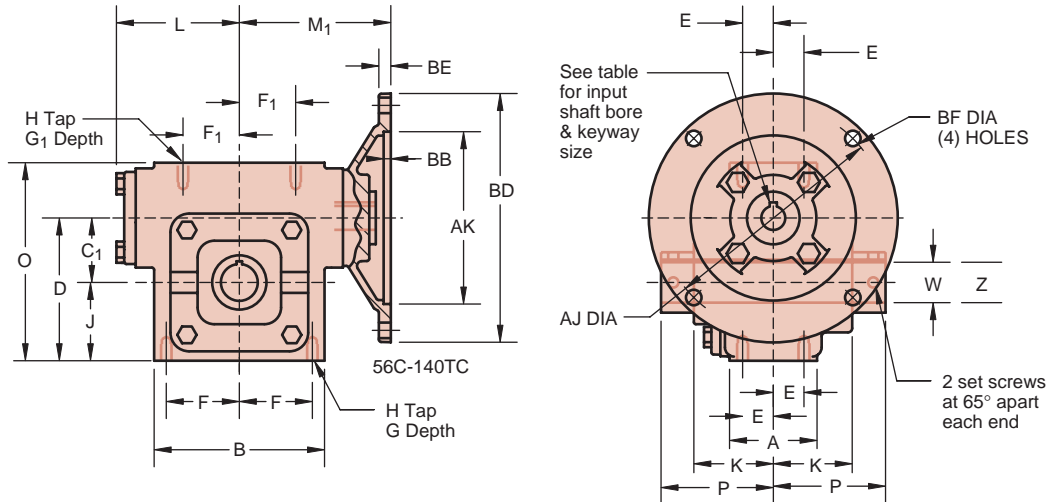
MDSS Model Information

Universal Quill Input Adaptor Hollow Output Shaft Housing Mount

DLR Assembly



DIMENSIONS



INPUT ADAPTOR DIMENSIONS (in.)

INPUT ADAPT. DIM.	56C	140TC	180TC	210TC
AJ	5.88	5.88	7.25	7.25
AK	4.50	4.50	8.50	8.50
BB	.19	.19	.19	.19
BD	6.50	6.50	9.00	9.00
BE	.31	.31	.38	.38
BF	.406	.406	.531	.531
KEYWAY	3/16 X 3/32		1/4 X 1/8	5/16 X 5/32
BORE ⁺⁰⁰¹ / _{-.000}	.6255	.8755	1.1255	1.3755

HOLLOW OUTPUT SHAFT BORES (S) STANDARD BORE (B) BUSHING

W**	KEYWAY	E17	E20	E24	E26	E30	E35	E43
.625	5/8	3/16 X 3/32	B					
.750	3/4	3/16 X 3/32	B					
.875	7/8	3/16 X 3/32	B					
1.000	1	1/4 X 1/8	S	B	B			
1.125	1-1/8	1/4 X 1/8		B	B	B		
1.188	1-3/16	1/4 X 1/8		B	B	B		
1.250	1-1/4	1/4 X 1/8		B	B	B	B	B
1.375	1-3/8	5/16 X 5/32			B	B	B	
*1.438	1-7/16	3/8 X 3/16		S	B	B	B	B
1.500	1-1/2	3/8 X 3/16			S	B	B	B
1.625	1-5/8	3/8 X 3/16						
1.688	1-11/16	3/8 X 3/16			S	B		
1.750	1-3/4	3/8 X 3/16				B	B	B
1.875	1-7/8	1/2 X 1/4						B
*1.938	1-15/16	1/2 X 1/4				S	B	B
2.000	2	1/2 X 1/4					B	B
*2.188	2-3/16	1/2 X 1/4					S	B
2.250	2-1/4	1/2 X 1/4						B
2.438	2-7/16	5/8 X 5/16						B
2.750	2-3/4	5/8 X 5/16						S

**Bore tolerances +.000+.002
Two puller slots opposed on all hollow output shafts
* Bore size 1438 on size E20: keyway is 3/8 x 1/8
* Bore size 1938 on size E30: keyway is 1/2 x 3/16
* Bore size 2188 on size E35: keyway is 1/2 x 1/8

SPEED REDUCER DIMENSIONS (in.)

Size	A	B	C ₁	D	E	F	F ₁	G DEPTH	G ₁ DEPTH	H TAP	J	K	L	M ₁ 56C 140TC	M ₁ 180TC	M ₁ 210TC	O	P	Z	lb.*
E17	2.38	4.63	1.750	3.88	.88	1.94	1.69	.63	.56	3/8-16	2.13	2.44	3.44	4.06	NA	NA	5.38	3.13	1.49	25
E20	2.38	5.25	2.000	4.13	.88	2.19	1.69	.63	.56	3/8-16	2.13	2.63	3.44	4.06	NA	NA	5.63	3.31	2.00	30
E24	3.13	5.38	2.375	5.25	1.13	2.19	2.19	.63	.57	1/2-13	2.88	2.75	4.50	5.38	5.38	NA	7.25	3.44	2.25	47
E26	3.13	5.88	2.625	5.75	1.13	2.44	2.44	.69	.69	1/2-13	3.13	2.81	4.50	5.38	5.38	NA	7.88	3.50	2.50	52
E30	3.50	6.62	3.000	6.50	1.31	2.75	2.75	.75	.75	1/2-13	3.50	3.00	4.63	5.56	5.56	NA	9.00	3.69	2.63	68
E35	3.75	7.69	3.500	7.50	1.31	3.25	3.25	1.00	1.00	5/8-11	4.00	3.38	5.46	5.81	5.81	NA	10.13	4.13	2.87	90
E43	4.38	8.75	4.250	8.63	1.63	3.75	3.75	1.00	1.00	5/8-11	4.38	3.63	6.28	6.63	6.63	6.63	11.50	4.38	3.88	183

* Approximate shipping weights Dimensions shown are for construction purposes only. Please contact Winsmith for certified dimension sheets.



2D DRAWINGS & 3D MODELS
www.WINSMITH.com

