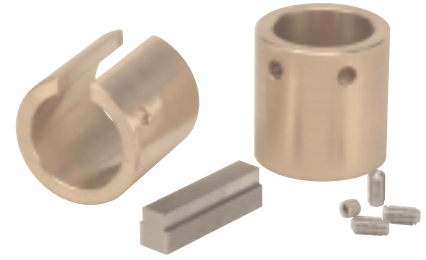
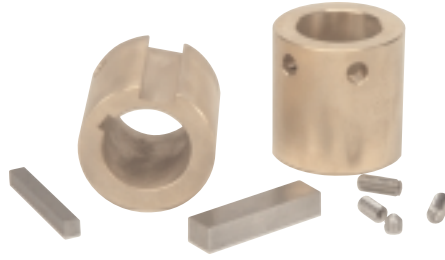


Hollow Output Shaft Bushing Kits



Cast Bore Bushing Kit

TYPE (C)
(2) Cast Bore Bushings

Keyed Bushing Kit

TYPE (K)
(1) Keyed Bushing
(1) Plain Bushing
(2) Drive Keys

Slotted Bushing Kit

TYPE (S)
(1) Slotted Bushing
(1) Plain Bushing
(1) Drive Key

HOLLOW SHAFT BUSHING CHART

SIZE	BUSHING I.D.	DRIVEN SHAFT O.D.	BUSHING LENGTH	DRIVEN SHAFT KEYWAY	KIT TYPE	KIT#		
E17	0.625	5/8	1.50	3/16 X 3/32	S*	WKE850578		
	0.750	3/4		3/16 X 3/32	S*	WKE850579		
1.000 STANDARD BORE - NO BUSHING REQUIRED**								
E20	0.630*		1.75	*	C	WKE850483		
	0.750	3/4		3/16 X 3/32	K	WKE850638		
	0.875	7/8		3/16 X 3/32	K	WKE850659		
	1.000	1		1/4 X 1/8	K	WKE850468		
	1.125	1-1/8		1/4 X 1/8	S*	WKE850660		
	1.188	1-3/16		1/4 X 1/8	S*	WKE850625		
	1.250	1-1/4		1/4 X 1/8	S*	WKE850469		
1.438 STANDARD BORE - NO BUSHING REQUIRED**								
E24	0.750*		1.75	*	C	WKE850484		
	1.000	1		1/4 X 1/8	S*	WKE850653		
	1.125	1-1/8		1/4 X 1/8	S*	WKE850661		
	1.188	1-3/16		1/4 X 1/8	S*	WKE850662		
	1.250	1-1/4		1/4 X 1/8	S*	WKE850470		
	1.375	1-3/8		5/16 X 5/32	S*	WKE850663		
	1.438	1-7/16		3/8 X 3/16	S	WKE850471		
1.500 STANDARD BORE - NO BUSHING REQUIRED**								
E26	0.880*		1.75	*	C	WKE850485		
	1.000	1		1/4 X 1/8	K	WKE850627		
	1.125	1-1/8		1/4 X 1/8	K	WKE877792		
	1.188	1-3/16		1/4 X 1/8	S*	WKE850634		
	1.438	1-7/16		3/8 X 3/16	S	WKE850472		
	1.250	1-1/4		1/4 X 1/8	S*	WKE850479		
	1.375	1-3/8		5/16 X 5/32	S*	WKE850664		
	1.500	1-1/2		3/8 X 3/16	S	WKE850473		
	1.688 STANDARD BORE - NO BUSHING REQUIRED**							

SIZE	BUSHING I.D.	DRIVEN SHAFT O.D.	BUSHING LENGTH	DRIVEN SHAFT KEYWAY	KIT TYPE	KIT#
E30	1.000*		2.00	*	C	WKE850486
	1.250	1-1/4		1/4 X 1/8	K	WKE850481
	1.375	1-3/8		5/16 X 5/32	S*	WKE850665
	1.438	1-7/16		3/8 X 3/16	S	WKE850474
	1.500	1-1/2		3/8 X 3/16	S*	WKE850637
	1.688	1-11/16		3/8 X 3/16	S*	WKE850475
	1.750	1-3/4		3/8 X 3/16	S*	WKE850666
1.938 STANDARD BORE - NO BUSHING REQUIRED**						
E35	1.000*		2.19	*	C	WKE850487
	1.250	1-1/4		1/4 X 1/8	K	WKE850582
	1.438	1-7/16		3/8 X 3/16	S*	WKE850482
	1.500	1-1/2		3/8 X 3/16	S*	WKE850639
	1.750	1-3/4		3/8 X 3/16	S*	WKE850656
	1.938	1-15/16		1/2 X 1/4	S	WKE850476
2.000	2	1/2 X 1/4	S	WKE850477		
2.188 STANDARD BORE - NO BUSHING REQUIRED**						
E43	1.500*		2.75	*	C	WKE850562
	1.500	1-1/2		3/8 X 3/16	K	WKE850654
	1.750	1-3/4		3/8 X 3/16	S*	WKE850667
	1.875	1-7/8		1/2 X 1/4	S*	WKE850668
	1.938	1-15/16		1/2 X 1/4	S	WKE878017
	2.000	2		5/8 X 5/16	K	WKE850593
	2.188	2-3/16		1/2 X 1/4	S*	WKE850560
	2.250	2-1/4		1/2 X 1/4	S*	WKE850669
	2.438	2-7/16		5/8 X 5/16	S	WKE850561
	2.500	2-1/2		5/8 X 5/16	S	WKE878080
	2.750 STANDARD BORE - NO BUSHING REQUIRED**					

S* = Bushing uses a step key
 * Rough bore size, bushing to be customer bored and keyed
 ** Bore tolerances +.000 +.002

Multimount