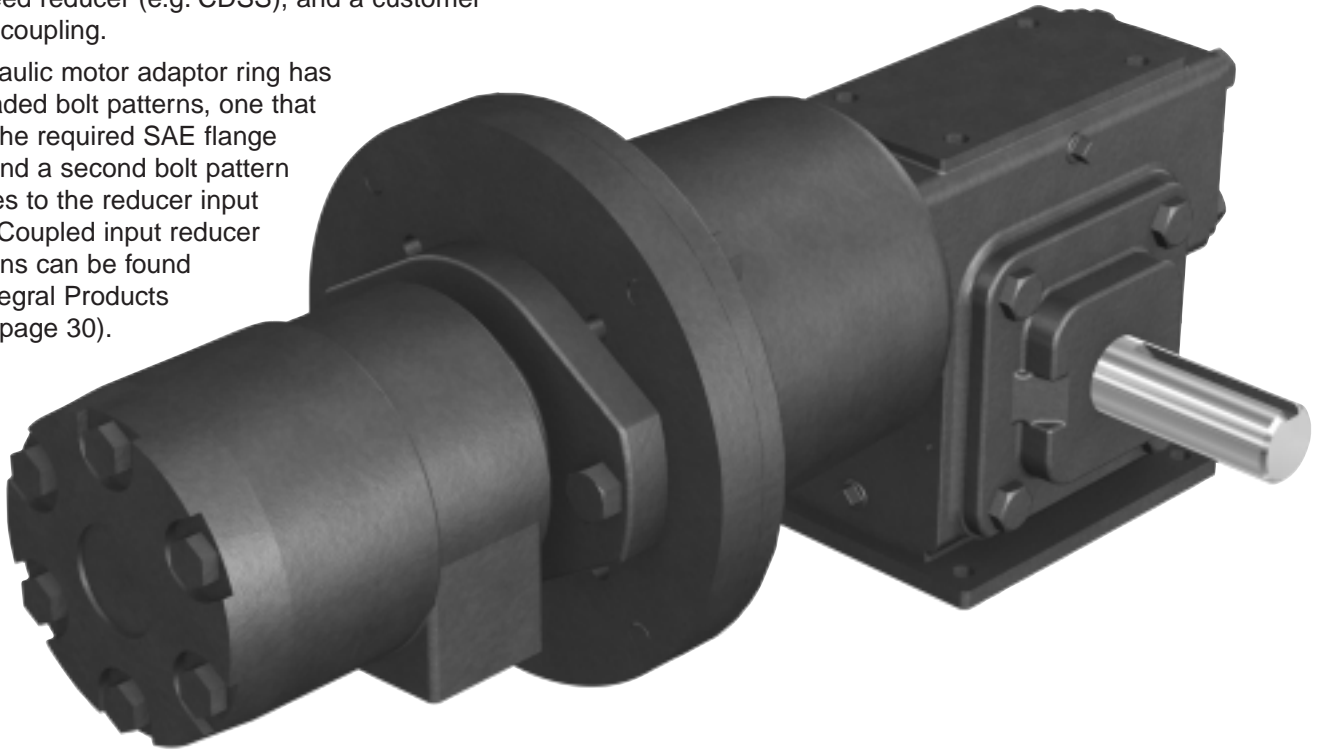


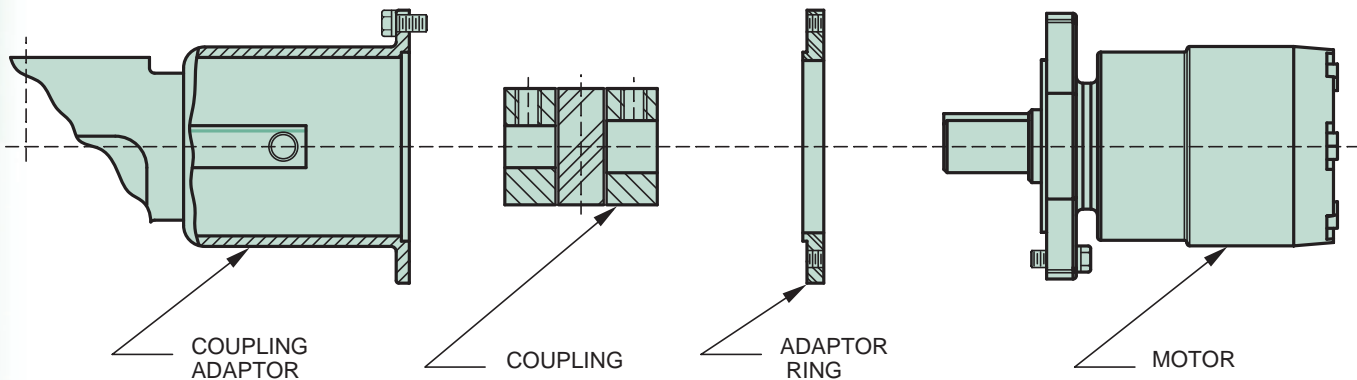
Hydraulic Motor Input Adaptor Rings

SE Encore products accommodate hydraulic motors by using an adaptor ring that interfaces with an SAE 2 or SAE 4 bolt motor mounting flange, a coupled input speed reducer (e.g. CDSS), and a customer supplied coupling.

The hydraulic motor adaptor ring has two threaded bolt patterns, one that match's the required SAE flange pattern and a second bolt pattern that mates to the reducer input adaptor. Coupled input reducer dimensions can be found in the Integral Products Section (page 30).



EXPLODED VIEW



Modified

Coupled Input Adaptor/Adaptor Ring Dimensions

DIMENSIONS

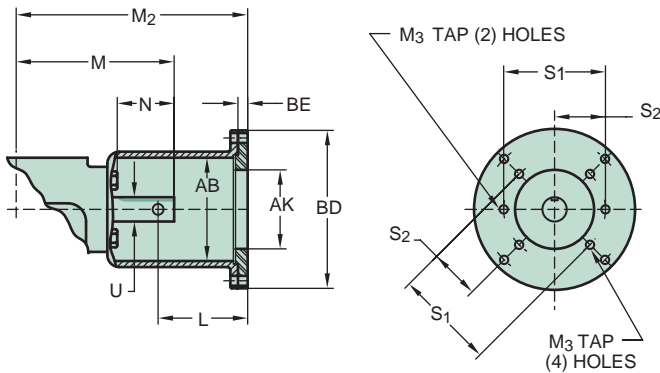


FIGURE 1
82-2, 82-4 / SAE A 2 & 4 BOLT
MOTOR MOUNTING

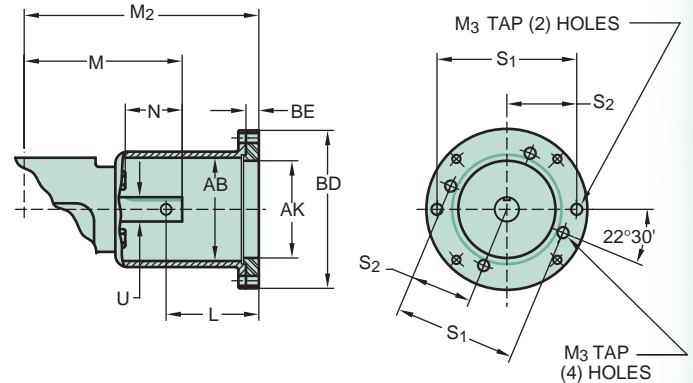


FIGURE 2
101-2, 101-4 / SAE B 2 & 4 BOLT
MOTOR MOUNTING

(NOTE: 101-4 / SAE B 4 BOLT MOTOR MOUNTS @ 22.5° ANGLE
CONTACT FACTORY IF MOTOR FLANGE THICKNESS IS NOT
BETWEEN .51-.57" TO INSURE PROPER BOLT ENGAGEMENT)

UNIT SIZE	FLANGE		FIG.	AB	AK	BE	BD	M	M ₂	N	L SET SCREW ACCESS	S ₁	S ₂	M ₃ TAP & DEPTH	U	KEYWAY	RECOMMENDED COUPLING		
	SAE	ISO/NFPA															LL SHAFT*	LS SHAFT	
E17	A 2-Bolt	82-2	1	3.75	3.25	.40	6.63	4.75	7.90	1.25	3.65	4.188	2.094	.375-16 x .40	.750	3/16 x 3/32	L 100	L 100	
	A 4-Bolt	82-4	1		3.25	.40						4.125	2.063						
	B 2-Bolt	101-2	2		4.00	.59			5.750			2.875	.500-13 x .53				L 099		
	B 4-Bolt	101-4	2		4.00	.59													5.000
E20	A 2-Bolt	82-2	1	3.75	3.25	.40	6.63	5.00	7.90	1.50	3.65	4.188		2.094	.375-16 x .40	.750	3/16 x 3/32	L 100	L 100
	A 4-Bolt	82-4	1		3.25	.40						4.125		2.063					
	B 2-Bolt	101-2	2		4.00	.59			5.750			2.875	.500-13 x .53	L 099*					
	B 4-Bolt	101-4	2		4.00	.59												5.000	
E24	A 2-Bolt	82-2	1	4.13	3.25	.40	6.63	6.50	9.53	2.00	3.78	4.188		2.094	.375-16 x .40	1.00	1/4 x 1/8	L 100*	L 100
	A 4-Bolt	82-4	1		3.25	.40						4.125		2.063					
	B 2-Bolt	101-2	2		4.00	.59		5.750	2.875			.500-13 x .53	L 110						
	B 4-Bolt	101-4	2		4.00	.59								5.000				2.500	
E26	A 2-Bolt	82-2	1	4.13	3.25	.40	6.63	6.50	9.53	2.00	3.78		4.188	2.094	.375-16 x .40	1.00	1/4 x 1/8	L 100*	L 100
	A 4-Bolt	82-4	1		3.25	.40							4.125	2.063					
	B 2-Bolt	101-2	2		4.00	.59		5.750	2.875			.500-13 x .53	L 110						
	B 4-Bolt	101-4	2		4.00	.59								5.000				2.500	
E30	A 2-Bolt	82-2	1	4.13	3.25	.40	6.63	7.00	10.15	2.13	3.90		4.188	2.094	.375-16 x .40	1.00	1/4 x 1/8	L 100	L 100
	A 4-Bolt	82-4	1		3.25	.40							4.125	2.063					
	B 2-Bolt	101-2	2		4.00	.59		5.750	2.875			.500-13 x .53	L 110						
	B 4-Bolt	101-4	2		4.00	.59								4.09				5.000	
E35	A 2-Bolt	82-2	1	4.13	3.25	.40	6.63	7.38	10.40	2.25	3.90		4.188	2.094	.375-16 x .40	1.00	1/4 x 1/8	L 100*	L 110
	A 4-Bolt	82-4	1		3.25	.40							4.125	2.063					
	B 2-Bolt	101-2	2		4.00	.59		5.750	2.875			.500-13 x .53	L 110						
	B 4-Bolt	101-4	2		4.00	.59								4.09				5.000	
E43	A 2-Bolt	82-2	1	4.13	3.25	.40	6.63	8.19	11.21	2.25	3.90		4.188	2.094	.375-16 x .40	1.25	1/4 x 1/8	CJ 38/45	L 110
	A 4-Bolt	82-4	1		3.25	.40							4.125	2.063					
	B 2-Bolt	101-2	2		4.00	.59		5.750	2.875			.500-13 x .53	L 110						
	B 4-Bolt	101-4	2		4.00	.59								4.09				5.000	

* Only available in shaft id code 22-1; 25-1 has interference with worm shaft.

▲ Winsmith recommends use of optional long length (LL) shaft due to longer length of engagement.

■ Use open spider on coupling.



2D DRAWINGS & 3D MODELS
www.WINSMITH.com

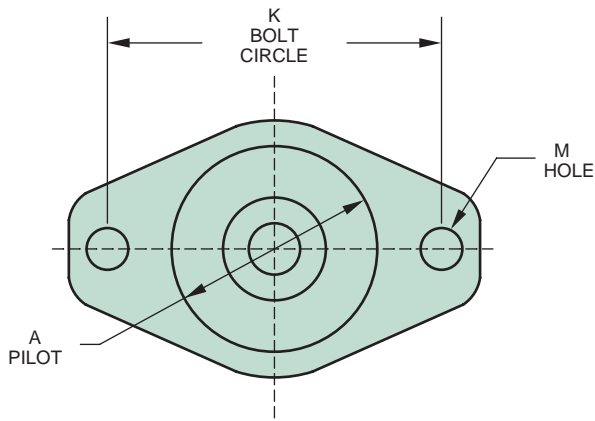


Modified

Coupled Input Adaptor/Adaptor Ring Dimensions

DIMENSIONS AND IDENTIFICATION CODE FOR MOUNTING FLANGES AND SHAFT ENDS IN ACCORDANCE WITH SAE J744-1996 AND ISO 3019-1:2001*

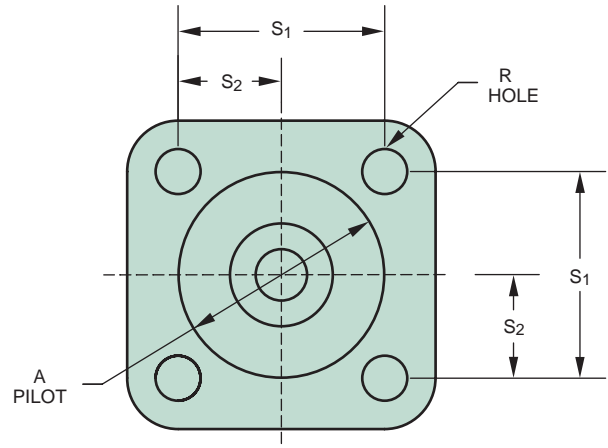
SAE 2-BOLT MOUNTING FLANGES



2-Bolt Mounting Flange Data

MOUNTING FLANGE		PILOT DIMENSIONS	FLANGE DIMENSIONS	
ISO/NFPA	SAE	A	K	M
82-2	A	3.250 - 3.248	4.188	.438
101-2	B	4.000 - 3.998	5.750	.562

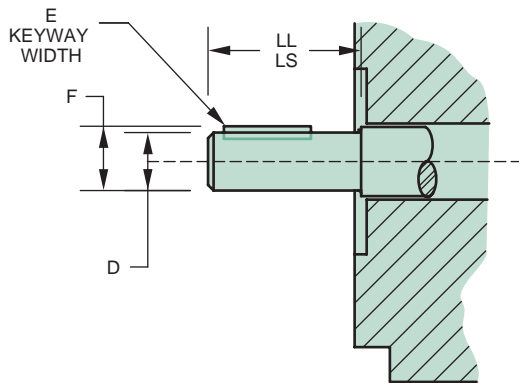
SAE 4-BOLT MOUNTING FLANGES



4-Bolt Mounting Flange Data

MOUNTING FLANGE		PILOT DIMENSIONS	FLANGE DIMENSIONS		
ISO/NFPA	SAE	A	S ₁	S ₂	R
	A	3.250 - 3.248	2.917	1.458	.438
101-4	B	4.000 - 3.998	3.536	1.768	.562

STRAIGHT SHAFT



Straight Shaft Dimensions

SHAFT I.D. CODE	D	+ .001	± .005	LL	LS
		- .001	F		
16-1	.625 .624	.1563	.693	2.00	.938
19-1	.750 .749	.188	.831	2.00	.938
22-1	.875 .874	.250	.982	2.50	1.312
25-1	1.000 .998	.250	1.106	2.75	1.500

Tolerances – 2 place dimensions ± .030
3 place dimensions ± .010

Motor Adaptor Ring Kits

HYDRAULIC MOTOR FLANGE	KIT #
SAE-A 2 OR 4 BOLT	YKIT9810175
SAE-B 2 OR 4 BOLT	YKIT9810176

Flange/Shaft Combinations

FLANGE SERIES	SHAFT SERIES
82-	16-
82-	19-
101-	22-
101-	22-

* Redesignation of ANSI/(NFPA) T3.9.2 R2-1990