

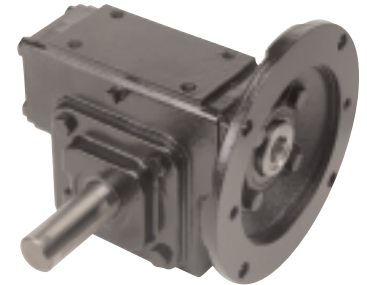
Lubricant Levels for Special Mounting Positions – Single Reduction Models

SE Encore Integral worm gear speed reducers are factory filled with lubricant for use in the mounting positions shown in the "Standard Mounting" column in the table below. If other mounting positions are required, the oil level in the reducer may need adjustment to ensure that all moving components receive

proper lubrication. Additional mounting positions can be accommodated by referencing the table below or by contacting your local representative or Winsmith. **Note: All SE Encore worm gear speed reducers use Mobil Glygoyle 460 lubricant. Do not mix with other types of lubricant.**

MOUNTING POSITIONS AND LUBRICANT LEVELS FOR SINGLE REDUCTION MODELS

PRODUCT FAMILY	STANDARD MOUNTING	ADDITIONAL MOUNTING POSITIONS					
		INVERTED		INPUT SHAFT HORIZONTAL		INPUT SHAFT VERTICAL	
XDNS XDTS XDUS XDHS							
XDBS							
XDJS							
XDVS							
XDLS							
XDSS XSTS XSUS XSHS							
XSBS							
XSJS							
XSFS							



Notes:

1. Fill, vent, level and drain locations are the same for quill and coupled models.
2. Double reduction size E35 and E43 models are supplied with grease fittings on the input shaft to ensure bearing lubrication for all mounting positions.
3. Contact Winsmith when input speeds are less than 1160 rpm to ensure proper lubrication.

- (F) REFILL PLUG
- (V) VENT PLUG
- (L) LEVEL PLUG
- (D) DRAIN PLUG

Lubricant Levels for Special Mounting Positions – Double Reduction Models

SE Encore Integral double reduction speed reducers are factory filled with lubricant for use in the standard mounting positions shown in the table below. If other mounting positions are required, the oil level in the reducer may need adjustment to ensure that all moving components receive proper lubrication.

Additional mounting positions can be accommodated by contacting your local representative or Winsmith. **Note: All SE Encore worm gear speed reducers use Mobil Glygoyle 460 lubricant. Do not mix with other types of lubricant.**

MOUNTING POSITIONS AND LUBRICANT LEVELS FOR DOUBLE REDUCTION MODELS

DOUBLE REDUCTION WORM/WORM STANDARD MOUNTING		DOUBLE REDUCTION HELICAL/WORM STANDARD MOUNTING	
XDND XDND XDUD XDHD		XDNX XDTX XDUX XDHX	
XDBD		XDBX	
XDJD		XDJX	
XDVD		XDVX	
XDLA		XDLX	
XDSA XSTA XSUA XSHA		XDSX XSTX XSUX XSHX	
XSBA		XSBA	
XSJA		XSJA	
XSFA		XSFA	



Notes:

1. Fill, vent, level and drain locations are the same for quill and coupled models.
2. Double reduction size E35 and E43 models are supplied with grease fittings on the input shaft to ensure bearing lubrication for all mounting positions.
3. Contact Winsmith when input speeds are less than 1160 rpm to ensure proper lubrication.

- (F) REFILL PLUG
- (V) VENT PLUG
- (L) LEVEL PLUG
- (D) DRAIN PLUG

