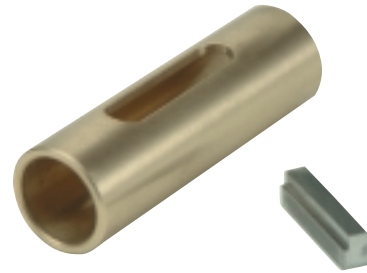


Accessories

QUILL INPUT BUSHINGS

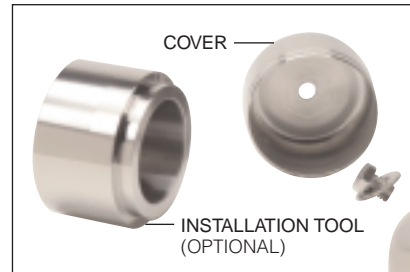
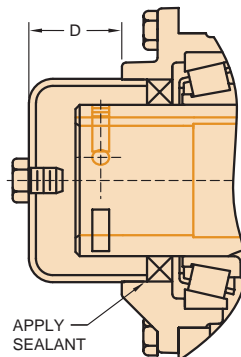
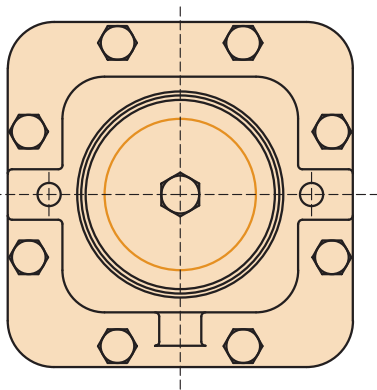


1 Piece Bushing

2 Piece Bushing

MOTOR FLANGE (SHAFT DIAMETER)	REDUCER INPUT ADAPTOR (BORE SIZE)	BUSHING LENGTH	KEYWAY SIZE	TYPE	KIT #
42C (0.375)	56C (0.625)	1.88	3/32 X 3/64	2 PIECE	WK9838045
48C (0.500)	56C (0.625)	2.00	1/8 X 1/16	2 PIECE	WK9838046
56C (0.625)	140TC (0.875)	1.44	3/16 X 3/32	1 PIECE	WK9810170
140TC (0.875)	180TC (1.125)	2.00	3/16 X 3/32	2 PIECE	WK9810174

HOLLOW SHAFT COVERS



SE Encore shaft covers provide an economical method for protecting the rotating shaft and isolating the seal from outside contaminants. All shaft covers are made from corrosion resistant stainless steel and fit over either shaft end while allowing at least one half inch of clearance for a driven shaft keeper plate.

DIMENSIONS

SIZE	D
E17	1.31
E20	1.25
E24	1.31
E26	1.38
E30	1.56
E35	1.56
E43	1.25

Parts Included in Cover Kit:

- Cover
- Bolt and Washer
- Installation Instructions

KIT PART NUMBERS

SIZE	COVER	INSTALLATION TOOL*
E17	CKIT917	CTKIT917
E20	CKIT920	CTKIT920
E24	CKIT924	CTKIT924
E26	CKIT926	CTKIT926
E30	CKIT930	CTKIT930
E35	CKIT935	CTKIT935
E43	CKIT943	CTKIT943

*Optional – available separately



2D DRAWINGS & 3D MODELS
www.WINSMITH.com

