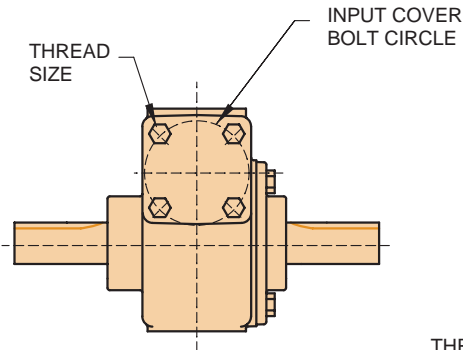


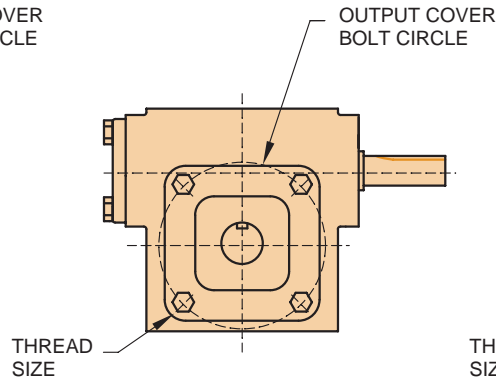
Input Cap And Output Cover Bolt Patterns

Often, the input cap and output cover fasteners are used for securing attachments such as auxiliary plates, flanges, or other equipment to a speed reducer. It is imperative that normal and acceptable engineering practices are maintained such that axial thrust loads and overhung load ratings for SE Encore

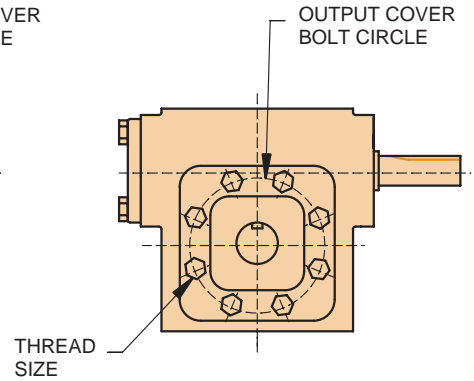
products are not exceeded when attaching any type of special flange, adaptor, or auxiliary items. If special mounting configurations are required, contact your local authorized WINSMITH distributor, representative or the factory for assistance.



E13 - E43



E13 - E20



E24 - E43

SIZE	INPUT COVER			OUTPUT COVER			
	BOLT CIRCLE	THREAD SIZE	NO. OF HOLES	BOLT CIRCLE	THREAD SIZE	NO. OF HOLES	SPACING
E13	2.125	1/4-20	4	3.125	5/16-18	4	90°
E17	2.625	5/16-18	4	4.063	5/16-18	4	90°
E20	2.625	5/16-18	4	4.438	5/16-18	4	90°
E24	3.438	3/8-16	4	4.875	5/16-18	8	45°
E26	3.438	3/8-16	4	5.438	5/16-18	8	45°
E30	3.875	3/8-16	4	6.125	3/8-16	8	45°
E35	3.875	3/8-16	4	7.250	3/8-16	8	45°
E43	3.875	3/8-16	4	8.250	3/8-16	8	45°

